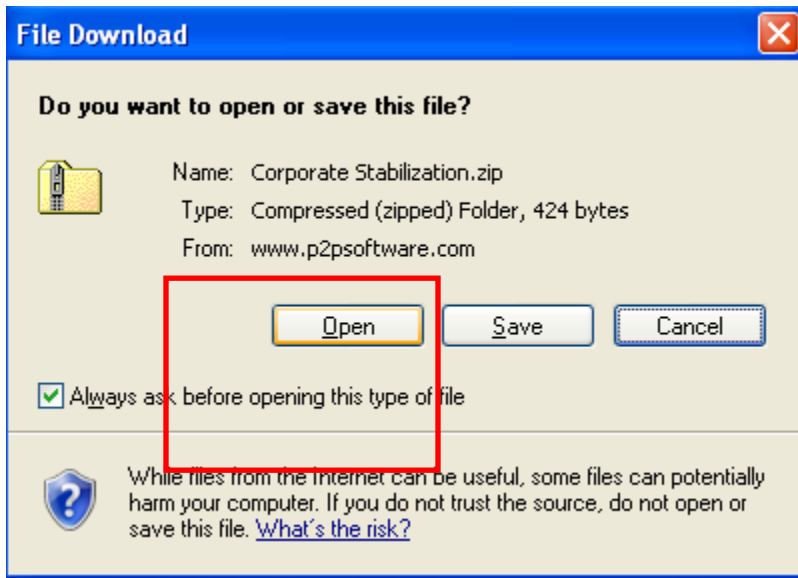
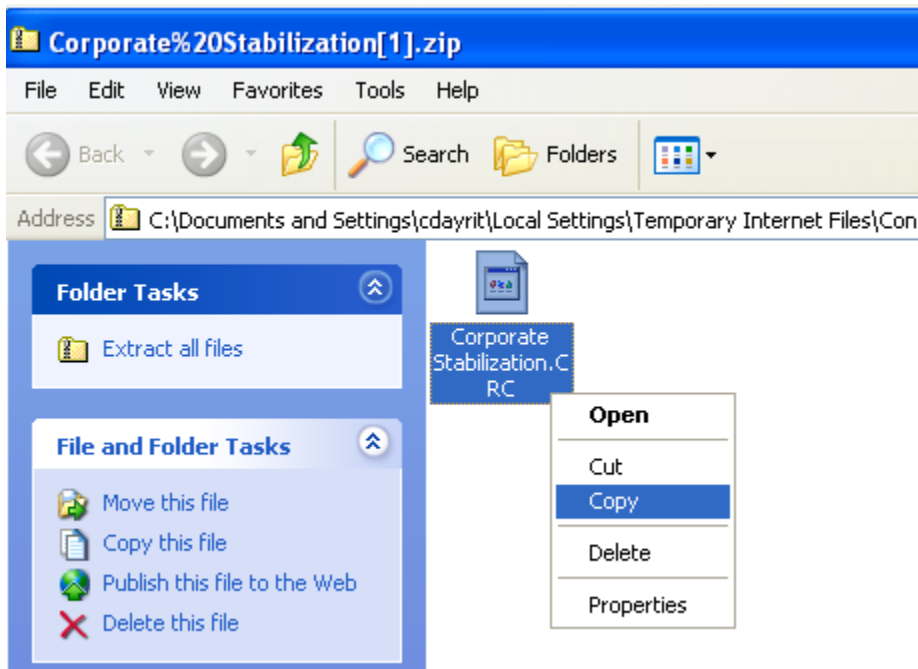


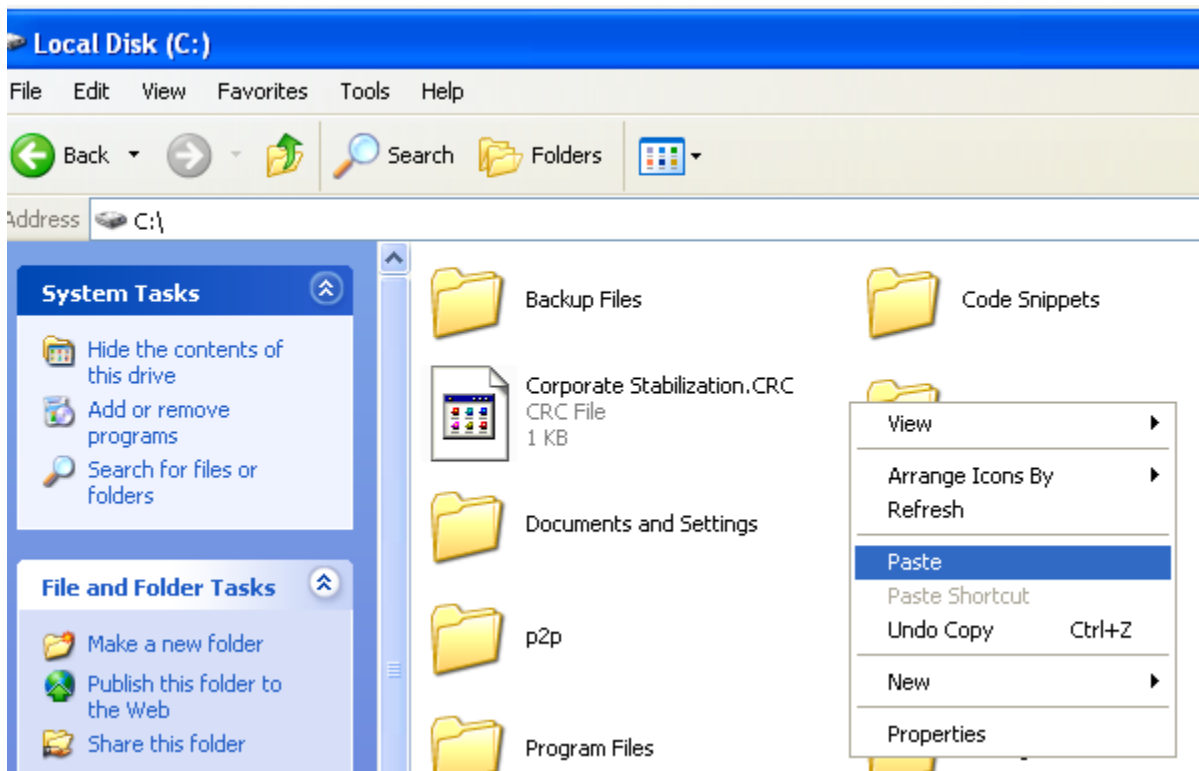
Instructions for importing custom displays into Peer to Peer 2.0.

- Open the .zip file

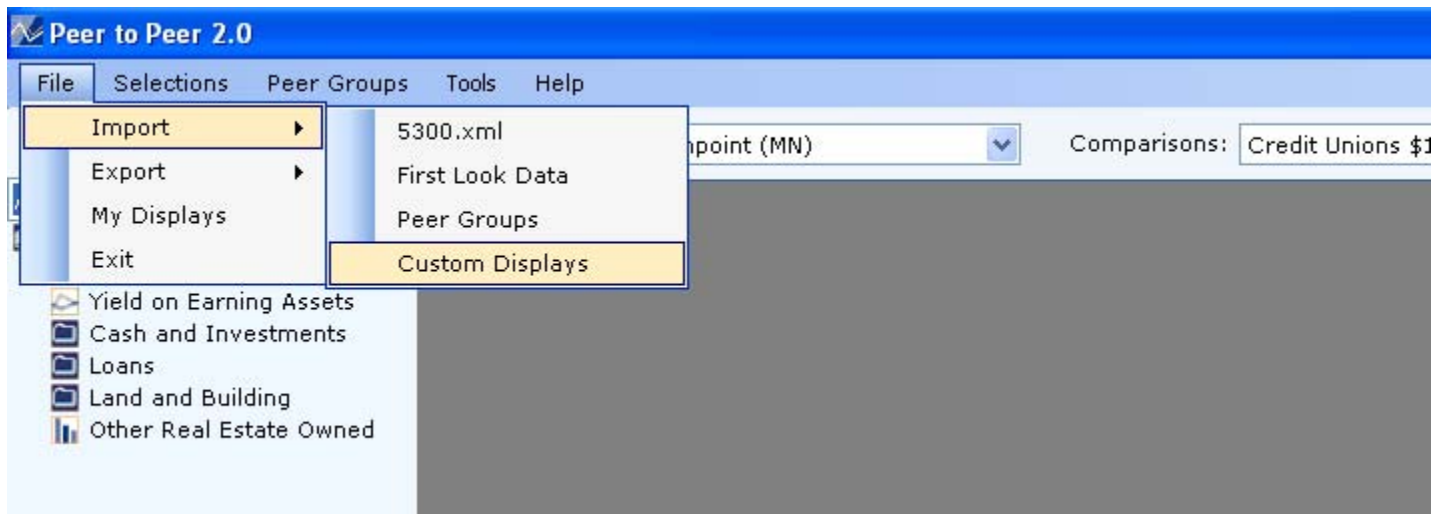


- Copy the .CRC file and paste the file into your computer (be sure to remember the location of this file for next steps)

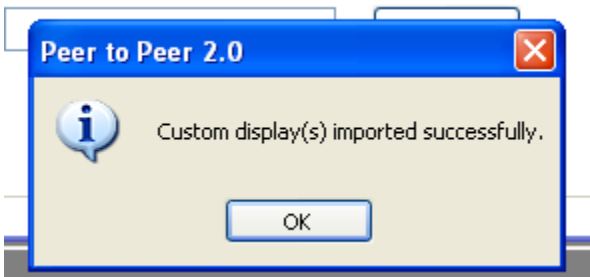
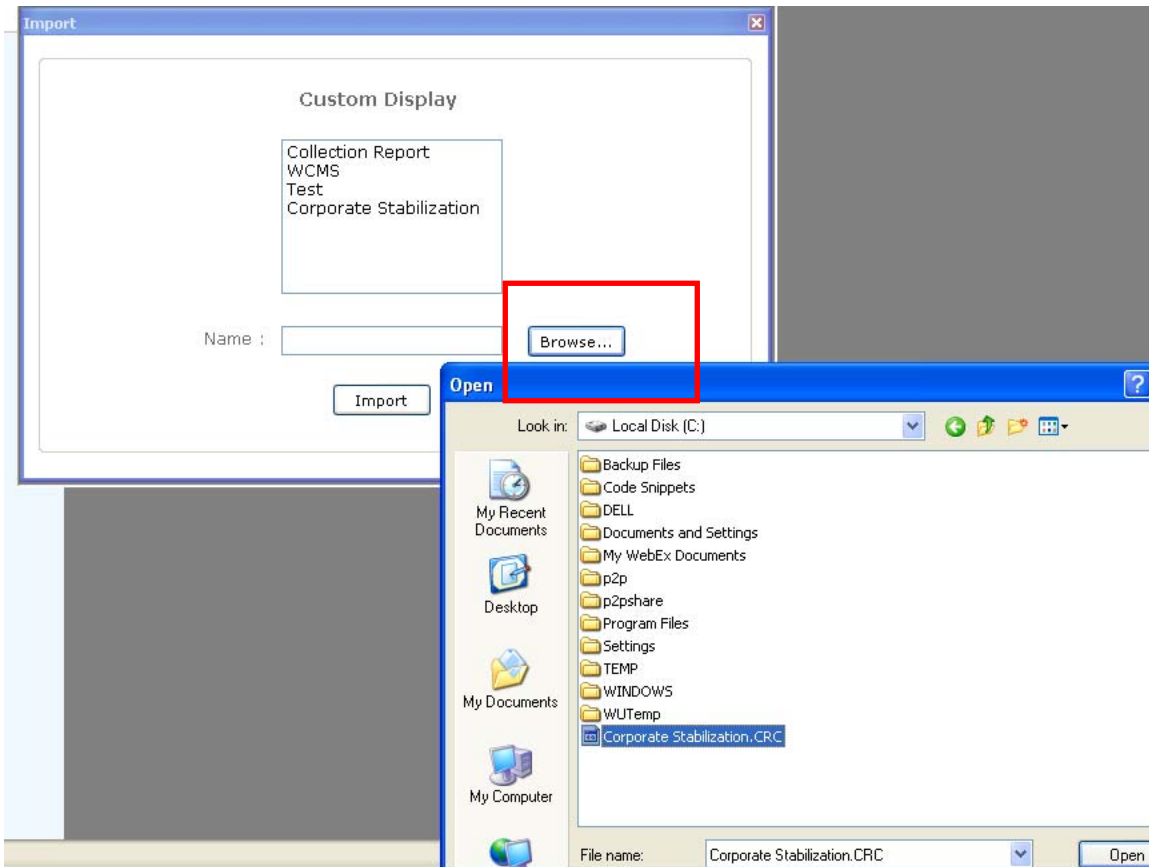




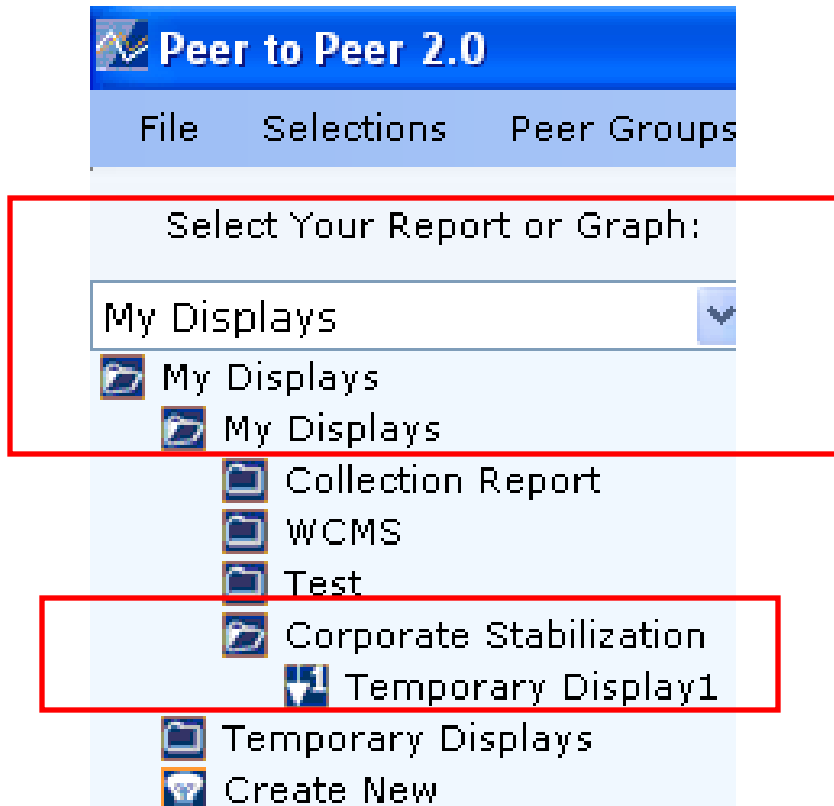
- Open the Peer 2.0 program
- At the upper left part of the screen click on File, scroll to "Import" and then scroll again and click on "Custom Displays."



- When the window pops up, click on the "Browse" button, go to the location of the saved file and select the .CRC file. Select "Import." You will be alerted when the file has been successfully imported and you can close out of the Import window using the X button.



- You can now view the custom displays found in the "My Displays" section of "Select Your Report or Graph" dropdown menu. Scroll to "My Displays" and double click on the "My Displays" folder. Double click on the recently imported folder to view all imported custom charts and reports.



Questions?

If you have any questions about these instructions or would like to have a Software Support Representative from Callahan & Associates help you through this process, please call 800.446.7453 or email software@creditunions.com