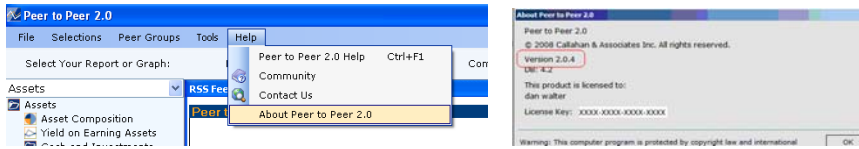


Version Number Worksheet for Peer to Peer 2.0

These instructions will assist in upgrading your Peer to Peer 2.0 application to the most recent data available.

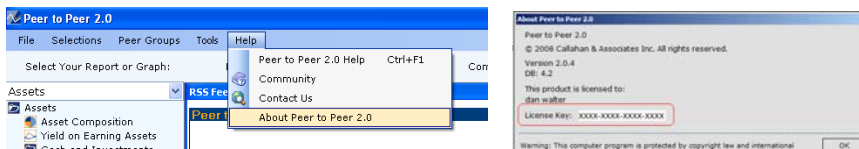
Step 1: Which version of Peer to Peer 2.0 do you have installed?

- To verify the version number of your installed software, open the application and then click on the Help menu on the top menu row, then click About Peer to Peer 2.0. You'll find the version number on the 3rd row of the About Peer to Peer 2.0 window.



Step 2: If the version number is less than 2.0.5 (such as 2.0.2, 2.0.3.2, 2.0.4.7), please proceed to Step 3 of these instructions. If the version number is 2.0.5 or higher, please stop at this step. You will receive your updates via the Internet. When you open up the program, you will be notified through a pop-up window in the right hand corner of the program that updates are available. Click the *Install Now* button. You can also go to *Tools – Check for Software Updates* to see if updates are available and click on the *Install Now* pop-up button. **Do not proceed to the following steps.**

Step 3: Make note of your License Key from the About Peer to Peer 2.0 window, above. You'll use it in Step 6.



Step 4: Please backup your custom peer groups and displays in Peer to Peer 2.0 and uninstall the program

- Use these step-by-step instructions at <http://www.p2psoftware.com/PDF/uninstallguide.pdf>

Step 5: Download the most recent setup.exe file from Callahan & Associates

- **The most recent setup.exe file is available from <http://www.creditunions.com/peer2/setup.exe>**

When prompted, you should save the setup.exe file to your desktop or another easily accessible location on your computer. Typical download times for this file range between 30 and 60 minutes, depending on your internet connection.

Step 5: Locate the setup.exe file on your computer when the download completes and use this file to reinstall your Peer to Peer 2.0 software.

- Double click on the setup.exe file to begin the installation.

- Follow the installation prompts, entering your unique contact information to properly register the software.

Step 6: Register your software with your License Key from Step 3.

- If you were unable to retrieve your key or experience problems registering, please contact Callahan & Associates: 800.446.7453 or software@creditunions.com

If you have any questions about these instructions or would like to have a Software Support Representative from Callahan & Associates help you through this process, please call 800.446.7453 or email: software@creditunions.com