

Uninstall Instructions for Peer-to-Peer 2.0

It is critical that the person logged into Windows has Administrator Level access to their computer in order to complete this process successfully. If you are not sure about the permissions associated with your Windows User Account, please contact your IT Administrator.

Step by Step Uninstall Process:

1. **Backup Any Saved Work.** We strongly recommend that you first backup any saved work if your intention is to reinstall Peer to Peer 2.0 in the future. This will ensure that you'll be able to recreate your saved reports quickly and easily. Backing up your custom work to a network drive or removable media periodically is also an ongoing best practice to guard against data loss in the event of hard drive failure.

Instructions for Backing Up Custom Displays:

Video - www.p2psoftware.com/TutorialVideos/ShareCustomReports/ShareCustomReports.htm

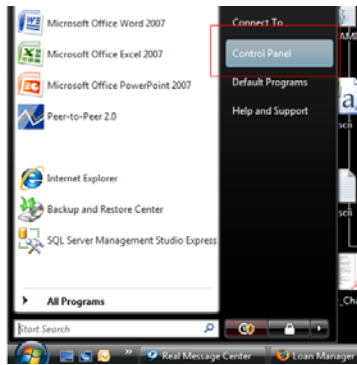
PDF - www.p2psoftware.com/PDF/ExportReports.pdf

Instructions for Backing Up Custom Peer Groups:

Video - www.p2psoftware.com/TutorialVideos/SharePeerGroups/SharePeerGroups.htm

PDF - <http://www.p2psoftware.com/PDF/ExportPeerGroups.pdf>

2. **Close Peer to Peer 2.0.** Please make sure to exit the program before uninstalling.
3. **Locate the Windows Control Panel.** First click on Start or the Windows Logo in the lower left corner of your system. And then click on Control Panel

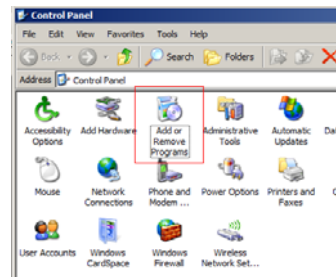


4. **XP Users will click on Add or Remove Programs, Vista Users will click on Uninstall a Program under the Programs Category.**

Vista

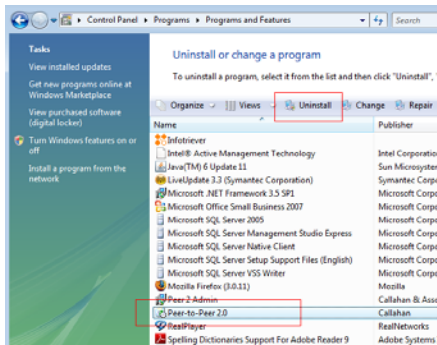


XP

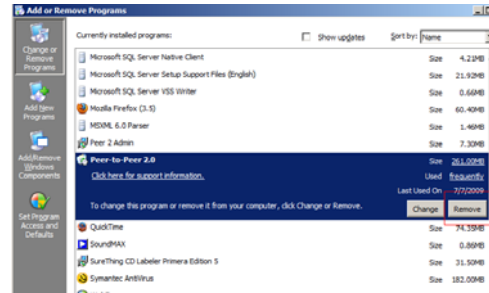


5. Find Peer to Peer 2.0 in your list of installed programs. Then click Remove or Uninstall.

Vista



XP



6. When completed, Peer to Peer 2.0 should be removed from the installed program list.
7. Close the Control Panel window. The uninstall process is completed.

If you have any questions about any of these steps, please call the Software Support Team for assistance - 800.446.7453.
You can ask for Sam, Dan or Claire.